

## SHARE Session #9777: Bonus – What's new in RDz?

### Lab exercises

Option 1: Navigating PDS on the Remote Systems view (5-10 minutes)

Option 2: Retrieve data set / Retrieve job (5-10 minutes)

Option 3: The new Eclipse-based editors for COBOL and PL/I (15-30 minutes)

### Introduction

In recent releases, RDz has added a number of enhancements to further improve user productivity and usability. In this bonus lab exercise, we will point out some of these features, and let you choose and pick what to try.

### About this bonus lab

This is a lab designed to showcase to you some of the newer features in RDz. Each option is modular so just pick and choose the one(s) you want to do.

### Pre-requisites

- None

Your User id for this lab is: SHARA

Your password is: firstpw

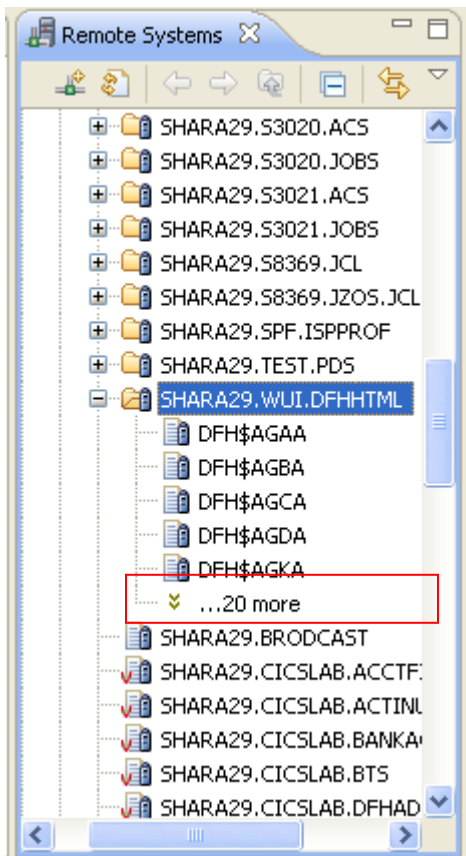
## ***Option 1: Navigating PDS on Remote Systems view***

In V 7.6.1, RDz introduced a new navigation model to view PDS on the Remote Systems view. This new model introduces the concept of viewing one “page” of data set at a time. The size of this page is customizable via Preferences (or from a data set’s Properties page if you prefer the customization be local to that library).

This option is useful if you want to limit the number of members shown to you when you expand a PDS (especially useful for large libraries)

1. Go to **Preferences > Remote Systems > z/OS > MVS Files > Default Expansion Page size** to change this page size to something smaller, e.g. “5”, click **OK**.

2. Now, expand a data set, such as SHARA29.WUI.DFHHTML, and you will see:

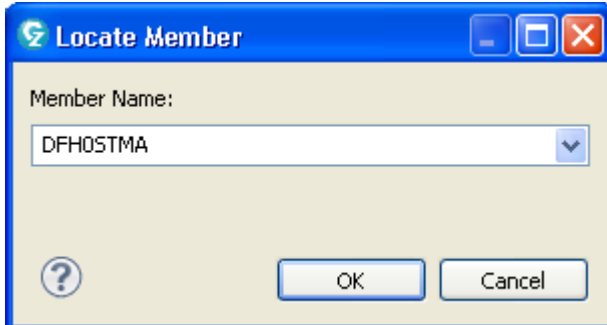


3. You can do the following to navigate:

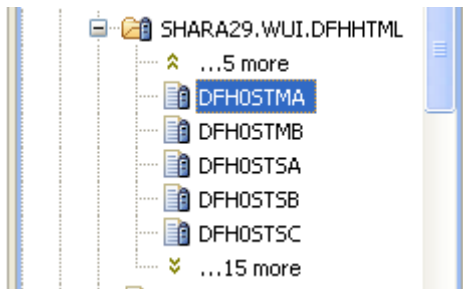
- **CTRL+PgDn** to go to the next page,
- **CTRL+End** to reach the last member,
- **CTRL+PgUp** to go up one page, and
- **CTRL+Home** to get back to the top

4. The **Locate** command can be used on a library to jump to a member. To invoke it, simply press **CTRL+L** when you have a library highlighted.

To try this, highlight a PDS, for example, SHARA29.WUI.DFHHTML, and press CTRL+L:



Enter the name of the member, press ENTER to reveal it on the tree view:



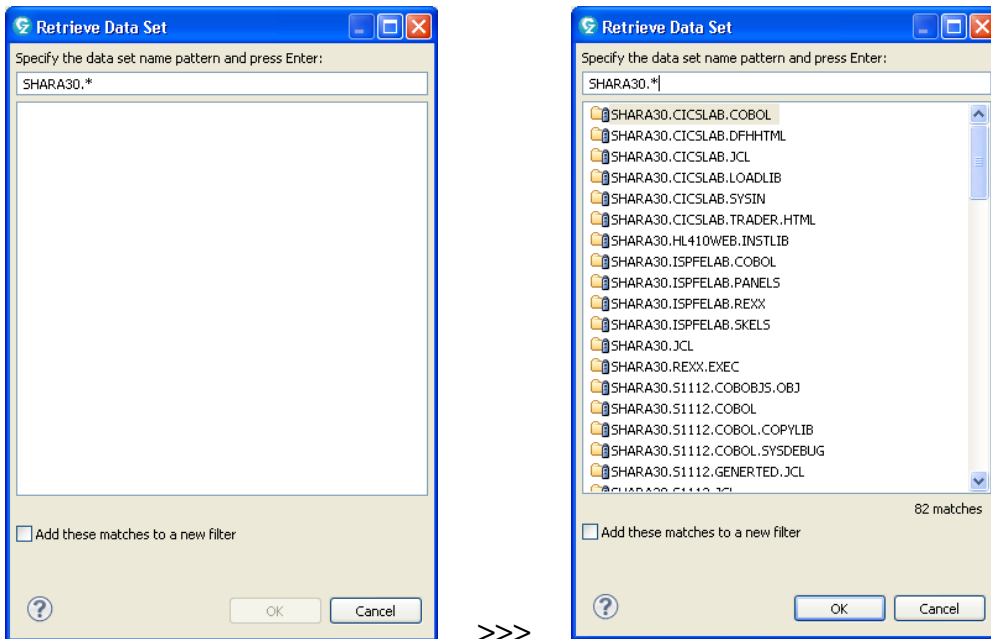
To learn more, go to the Education Assistant site > Rational Developer for System z > V7.6 <http://publib.boulder.ibm.com/infocenter/ieduasst/rtnv1r0/index.jsp> and view the demo “Navigating Partitioned Data Sets (V7.6.1)”

## Option 2: Retrieve data set / Retrieve job

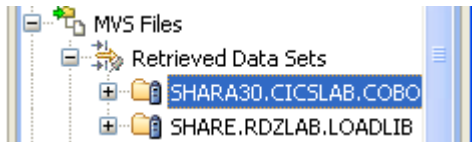
In V8.0.1, RDz introduced a new pair of functions to simplify library access and job access without the need for a user to create a filter first.

For example, in the RDz COBOL lab, you were told to create a filter to view the libraries under the student ID: SHARA30. However, you could have simply used **Retrieve Data Set** to accomplish the same task:

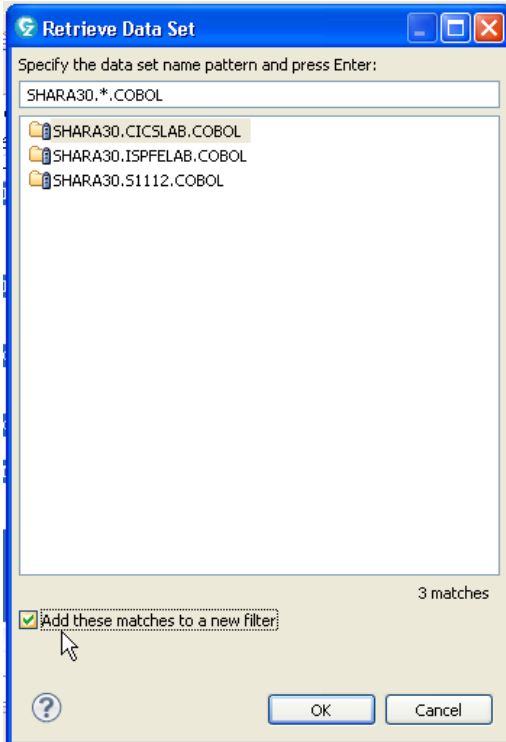
1. On Remote Systems view, highlight **MVS Files**, then press **CTRL+R** to bring up the **Retrieve data set** dialog.
2. Enter the data set name pattern. In this case, try “*SHARA30.\**”, and press **ENTER**.



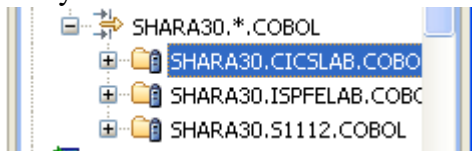
3. Highlight a data set on the list, and click **OK**. The data set is revealed on the tree view:



4. You can also use the Retrieve data set dialog to create persistent filters. To do so, enter your search query, review the list of results. If you are content with what you see, select the check box “Add these matches to a new filter”:



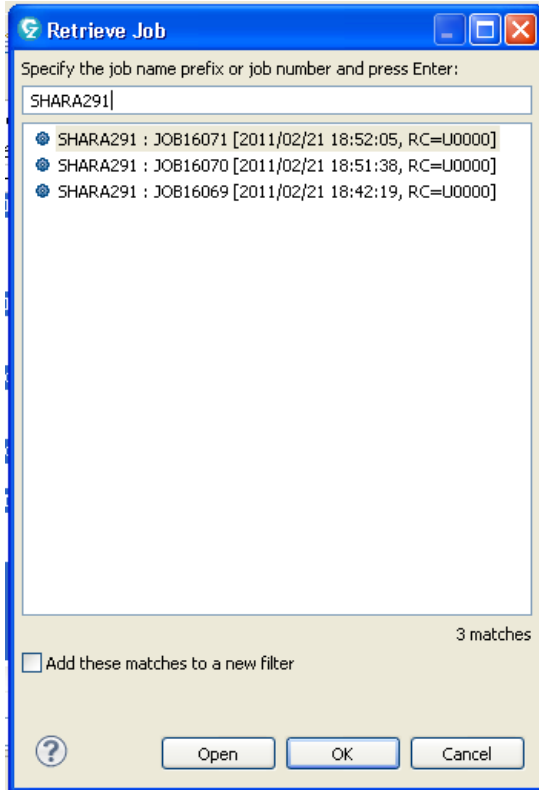
and you will see the filter created on the tree view:



The filter will remain there until you explicitly delete it.

5. The same design is applied to viewing job output. On the JES node, you can press **CTRL+J** to bring up the **Retrieve job** dialog.

6. Enter the job prefix (or the job id if you know it) and press **ENTER** to retrieve the matching list:



7. From the list, you will see the timestamp and return code of the job.

Highlight the job and choose one of the two options:

i) If you want to see the job revealed on the tree view (for example, for long running job where the output might not be ready), click **OK**.

ii) if you want to view the job output, click **Open**, and it's opened in the editor.

**To learn more, go to the Education Assistant site > Rational Developer for System z > V8.0.1 <http://publib.boulder.ibm.com/infocenter/ieduasst/rtnv1r0/index.jsp>**

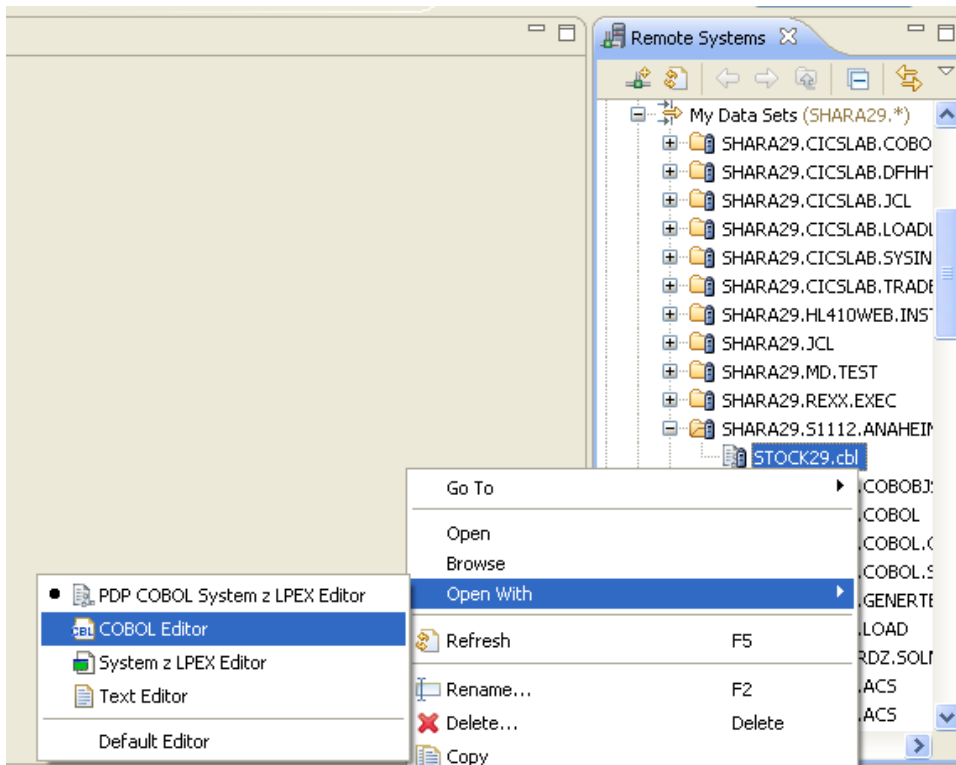
**and view the demo “Retrieve data sets – instant access to data sets without creating filters” and “Retrieve jobs – Quick access to JES jobs without creating filters”**

---

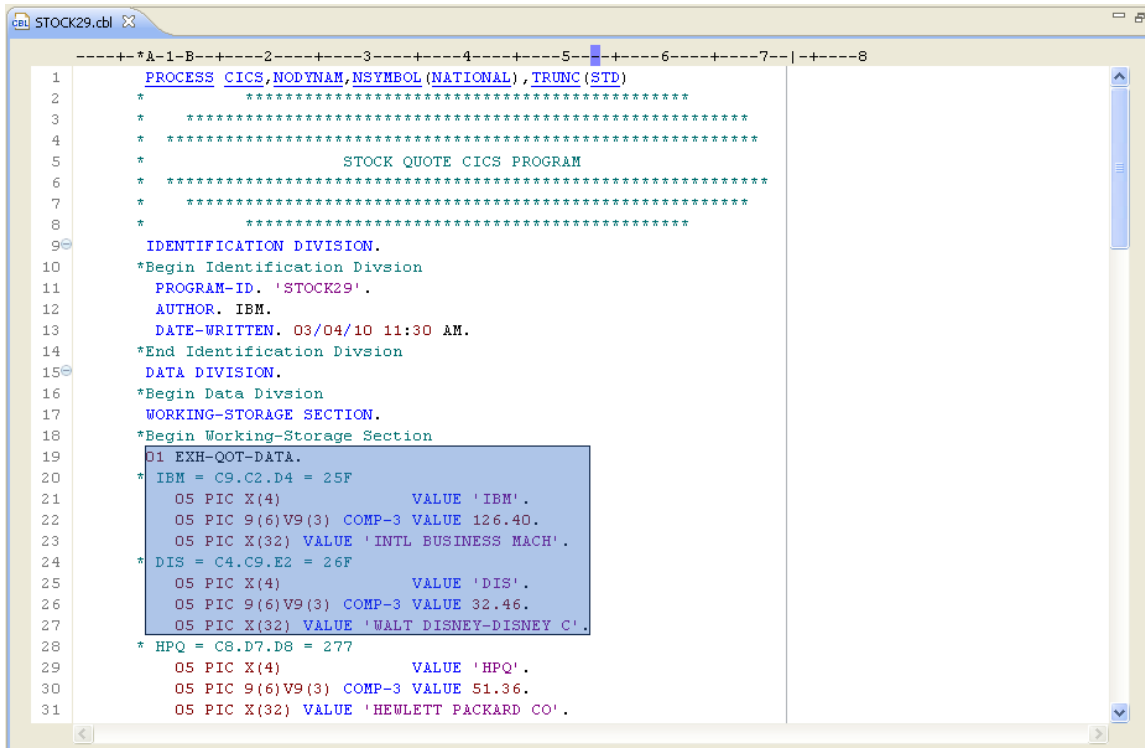
### Option 3: The Eclipse based COBOL and PL/I editors

In V8.0.1, RDz introduces a pair of new Eclipse based editors to support the development of COBOL and PL/I programs. The Eclipse based editors provide a consistent user experience with other Eclipse editors such as Java and C/C++ editors. In addition, because they are Eclipse-based, they have the advantage of inheriting the latest features from the based Eclipse text editor framework as the latter evolves.

The default editor in RDz continues to be the System z LPEX editor. However, if you prefer, you can change this default in Eclipse Preferences. Alternatively, you can highlight a COBOL or PL/I member, and select **Open With > COBOL editor** (or *PL/I editor, depending on the language*):



and you will get:



```
-----*A-1-B-----2-----3-----4-----5-----6-----7-----8
1  PROCESS CICS,NODYNAM,NSYMBOL(NATIONAL),TRUNC(STD)
2  *
3  *
4  *
5  *          STOCK QUOTE CICS PROGRAM
6  *
7  *
8  *
9  IDENTIFICATION DIVISION.
10 *Begin Identification Division
11   PROGRAM-ID. 'STOCK29'.
12   AUTHOR. IBM.
13   DATE-WRITTEN. 03/04/10 11:30 AM.
14 *End Identification Division
15 DATA DIVISION.
16 *Begin Data Division
17 WORKING-STORAGE SECTION.
18 *Begin Working-Storage Section
19 01 EXH-QOT-DATA.
20 * IBM = C9.C2.D4 = 25F
21   05 PIC X(4)          VALUE 'IBM'.
22   05 PIC 9(6)V9(3) COMP-3 VALUE 126.40.
23   05 PIC X(32) VALUE 'INTL BUSINESS MACH'.
24 * DIS = C4.C9.E2 = 26F
25   05 PIC X(4)          VALUE 'DIS'.
26   05 PIC 9(6)V9(3) COMP-3 VALUE 32.46.
27   05 PIC X(32) VALUE 'WALT DISNEY-DISNEY C'.
28 * HPQ = C8.D7.D8 = 277
29   05 PIC X(4)          VALUE 'HPQ'.
30   05 PIC 9(6)V9(3) COMP-3 VALUE 51.36.
31   05 PIC X(32) VALUE 'HEWLETT PACKARD CO'.
```

To learn the various features in these Eclipse based editors, go to the Education Assistant site > Rational Developer for System z > V8.0.1 > Enterprise application development and transformation:

<http://publib.boulder.ibm.com/infocenter/ieduasst/rtnv1r0/index.jsp>

and view the demo “COBOL editor” or “PL/I editor”

For extra credits, take a look at the “Code template for COBOL and PL/I” demo on the same page to learn how you can use code template with the editors.

---

--- End of Lab ---